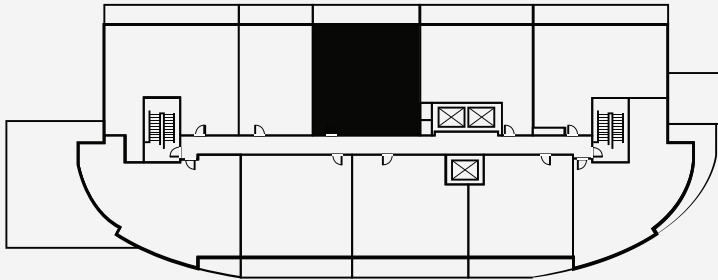




PIVOINE

2 Bed | 2 Bath | 1,057 SqFt

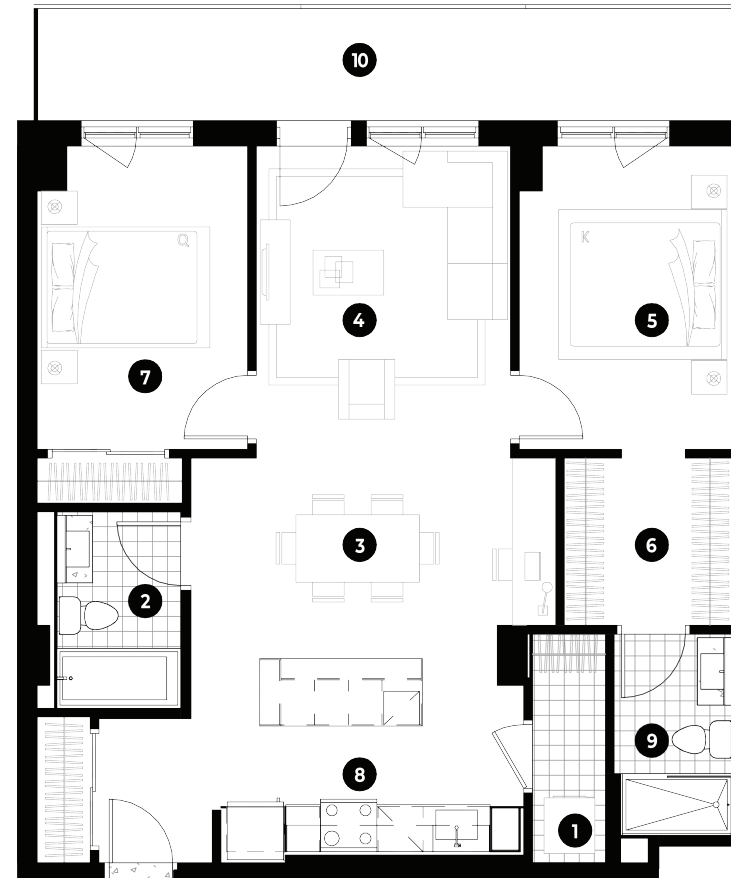
CP2: 310 - 910



CENTRAL  PARC LAVAL

SOME PLACES YOU VISIT, *SOME PLACES YOU STAY*

CENTRALPARCLAVAL.COM



- | | | | | | |
|---|------------------------------|-----------------|----|------------------------------|----------------|
| 1 | BUANDERIE / LAUNDRY ROOM | 3'-3" x 10'-2" | 6 | WALK-IN | 7'-6" x 7'-5" |
| 2 | SALLE DE BAIN 1 / BATHROOM 1 | 5'-3" x 9'-0" | 7 | CHAMBRE 2 / BEDROOM 2 | 9'-4" x 13'-6" |
| 3 | SALLE À MANGER / DINING ROOM | 14'-4" x 10'-8" | 8 | CUISINE / KITCHEN | 13'-6" x 9'-1" |
| 4 | SALON / LIVING ROOM | 11'-4" x 12'-2" | 9 | SALLE DE BAIN 2 / BATHROOM 2 | 5'-3" x 9'-0" |
| 5 | CHAMBRE 1 / BEDROOM 1 | 9'-6" x 13'-6" | 10 | BALCON / BALCONY | 31'-4" x 5'-3" |

Floor plan dimensions and layouts may not be exactly as shown. Suites are leased unfurnished and furniture graphics are for visual reference only. All pricing and rental rates are subject to change without notice. E. & O.E.